

More on **PRAGMA**®

**DOCUMENTS**  
**& TRAINING**

Process

**S4BT**

*More solutions, more business*





Our organization counts over 50 specialists, and it has ISO 9001 certification.

Our approach is what makes the difference.

That is why, for over 20 years, important national and foreign clients have used our innovative **Software** solutions and our specific consultancy in **Quality Assurance**, **Engineering** and **Production**.



*“Professionalism and competence have always characterized JC’s and S4BT’s professional relationships. S4BT’s primary aim is to take care of the client and smartly develop new software systems to manage specific processes. The finished product can also be used by a non-skilled IT user. The result always aims at quick data recovery, which is important especially in case of Ministerial or external authorities inspection. A practical contribution was provided in writing reports and in the validation processes of IT systems. The consultancy provided for production process validations, protocols and validation reports was carefully defined in every single step of the process involved with the technical competence that S4BT can boast.”*

*Quality Processes Manager EMEA*

*Janssen Cilag SpA*



# OUR CLIENTS:

## Software





# PRAGMA WFM

Work Flow Manager

*“We have been using PRAGMA® for a few months now and we can undoubtedly say that it made our life simpler!*

*We use it on a daily basis for our work, especially for the processes in the "Change" and “Non-conformities” Quality area, which are important areas for those who work in a controlled sector.*

*We are really happy with our choice.”*

QA Manager & QP

COSMA SPA







**S4BT**  
More solutions, more business

*Making things  
simple*



## *Realtime* Information

PRAGMA®'S Doc&Tra module constantly updates the list of company Documents and the state of Personnel Training making them ready to use if requested.





# *Simple* and *quick Audits*

Doc&Tra traces and documents all the activities, both in *Audit Trail* and in *Dossier*.

The general filters and reports help the user recover any information in no time

.





## *A Guide* for your **Process**

PRAGMA®'s Doc&Tra guides and supports users according to a standardized process which follows the designed flow, including all stages and signatures.

Human mistake is drastically limited thanks to the controlled filing in of all fields.

Inserting process configuration data is rapid and simple.





## *Management of Doc and Training* Stages

Following the formalization of a company document, PRAGMA®'s Doc&Tra automatically finds and manages all the Trainings, covering all the management stages: from writing reports to Training.

The system enhances sequential activities within the deadlines thanks to specific automatic processes and the possibility to send notifications in real time.

The platform always guarantees the use of official documents by collecting obsolete copies. The qualification is released after the completion of all trainings.



**S4BT**  
More solutions, more business

*Connecting*





## *Collecting* information

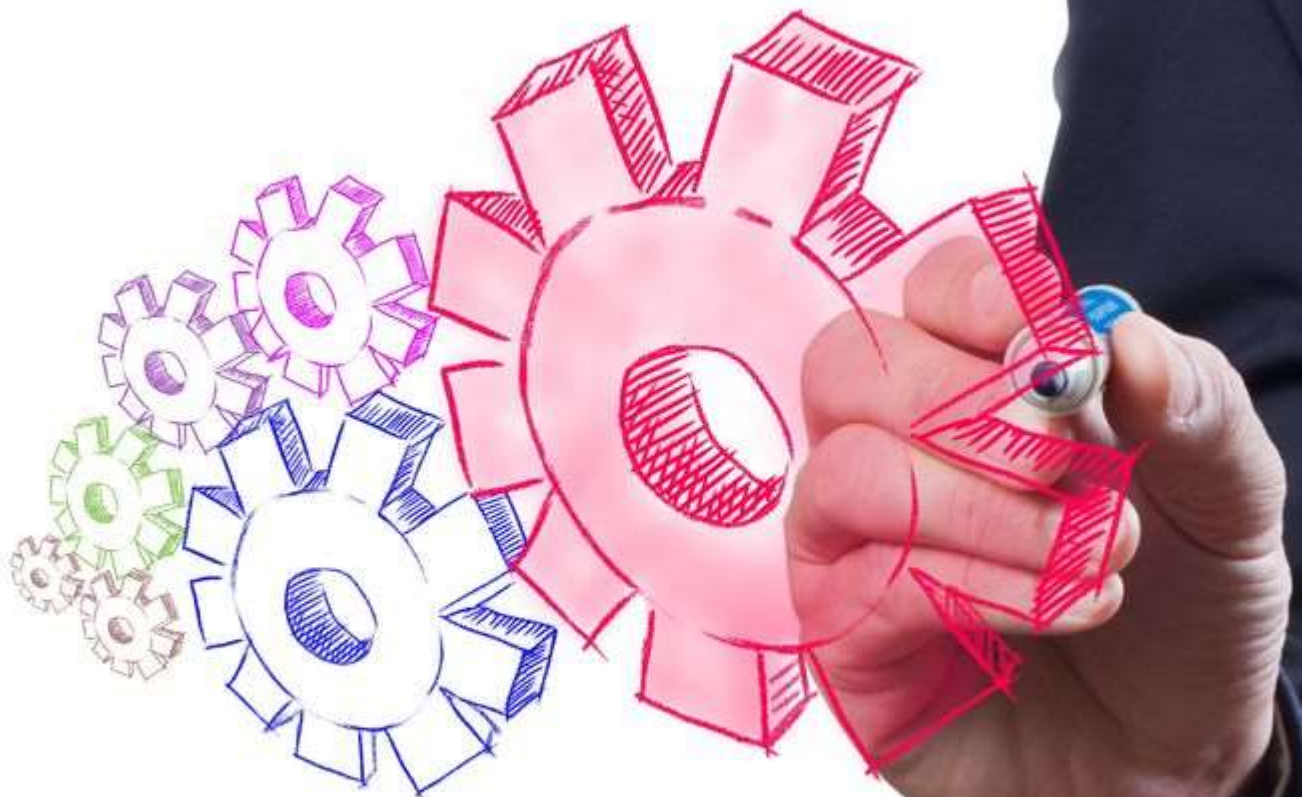
All the information related to Personnel Training and Company Documents are archived in one solution.

PRAGMA®'s Doc&Tra connects and synthesizes all data in real time through reports on the activity processing and the validity of the Platform. This is carried out without system integrations.



# A Module *integrable* With other Systems

PRAGMA®'s Doc&Tra receives all the data of other systems automatically and in real time. It maintains the ownership of the information on the proprietary system.





# User and Supervisor are *contacted via Email*

Doc&Tra offers a precise view of all the user's and his Supervisor's tasks.

The system constantly sends updates on activities to carry out, on activities being carried out and on new activities.





**S4BT**  
More solutions, more business

*Optimizing*

# One *Module* for *Different company Areas*

The Documents Module manages all documents inside a company area, even when the document does not imply Training.

The Training Module manages all company Trainings and it can be disconnected by SOPs





# One Training

## For Different Areas



Training Management is centralized.

Users of different areas can be trained according to predefined Training Plans. A time and resource saving solution.



# *Automatic* Correction of Questionnaires

PRAGMA®'s Doc&Tra directly evaluates questionnaires, avoiding possible human mistakes due to corrections, saving time and money.





**S4BT**  
More solutions, more business

*Supervising*





An even more *accurate Compliance*

PRAGMA®'s Doc&Tra is the result of our wide experience and it guides the user in managing activities according to highly-elevated standards and common usage.



# Total data *Control*

PRAGMA®'s Doc&Tra allows for a total management of data, precision in data insertion and full traceability.

All the data of the Documents and Trainings are elaborated, extracted and synthesized in Reports.

The System makes cross references, signaling possible mistakes in real time.





*More solutions, more business*

**Software Solutions and Consulting  
Services for Company Processes**



[www.s4bt.it](http://www.s4bt.it)



[marketing@s4bt.it](mailto:marketing@s4bt.it)



Via PL Nervi – Latinafiori Torre 4  
«Magnolie», 28-31/A, Latina



[s4bt.srl](https://www.s4bt.srl)



+39. 0773.69.42.45

*Follow us on*

